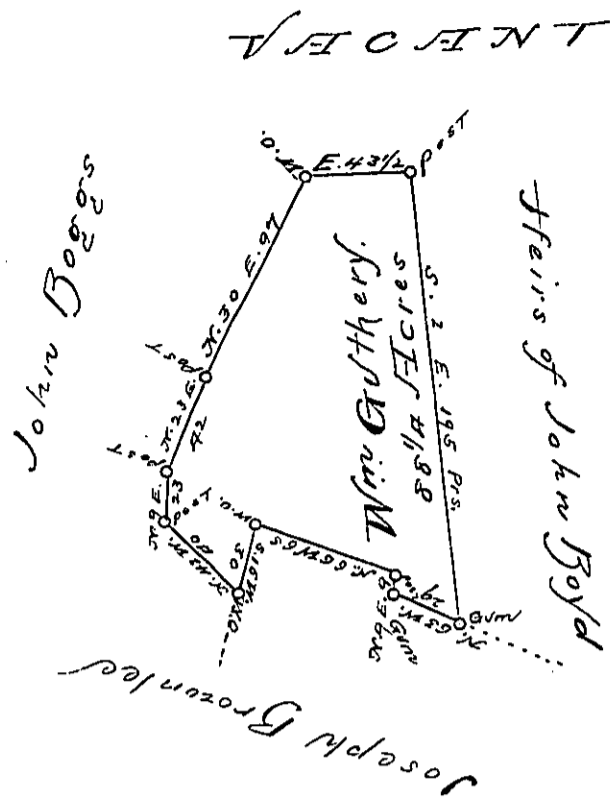


Beginning at a Gum Tree

- N. 63° W. 29
 - N. 9 E. 39
 - N. 66 W. 65
 - S. 16 W. 30
 - N. 42 W. 40
 - N. 9 E. 23
 - N. 23 E. 42
 - N. 50 E. 37
 - S. 2° E. 195 to the Beginning
- Perches



A Draught of a Tract of Land Situated in Hempfield Township Westmoreland County Containing Eighty Eight Acres & one Quarter and an Allowance of Six Per Cent. Surveyed on the Twenty Seventh Day of February 1785 In Pursuance of a Warrant Granted William Gutting Bearing Date March 10th 1785.

To John Lukens Esq }
 Surveyor General } Jno. Henderson,
 D.S.

IN TESTIMONY that the above is a copy of the original remaining on file in the Department of Internal Affairs of Pennsylvania, made conformably to an Act of Assembly approved the 16th day of February, 1833, I have hereunto set my Hand and caused the Seal of said Department to be affixed at Harrisburg, this thirtieth day of March 1894.

John S. Stewart
 Secretary of Internal Affairs.